



Egyptian Plastic Manufacturers

EDGE BANDING
CATALOG
2023





INDEX

PARTICULARS

1. ABOUT EPM

2. ABOUT EPM EDGE BAND TAPE

3. INFRASTRUCTURE

4. STANDARD OFFERINGS

5. TECHNICAL DETAILS

6. BESPOKE EDGE BAND SERVICES

7. EDGE BAND SHADE CARD



In 2020, EPM group began as a little enterprise to produce edge-banding for the local furniture manufacturers, and quickly became a leading player in the market, serving 300+ clients in 4 different countries. With ground-breaking quality, EPM believes in investing in the well-educated youth and the skilled workers to compete in producing affordable high-quality products that serve the furniture industry.

No matter your business size, you can trust EPM Group for quality, consistency, and professionalism. We have a little something for everyone! It is in our DNA. Trusted by numerous partners in different countries, EPM is known to walk the extra mile by providing the desired product for every decor need, and responding to every issue that may face the valued customers.



PVC EDGE BAND

EPM Edge band is an innovative technology created to create a seamless, coherent appearance in edge banding. High-quality panels require matching edge banding strips in color, design, and finish to shine truly. In the market, EPM has been the leading supplier of Edge band tapes in Egypt, offering cutting-edge technology that can meet the qualitative criteria that the market demands.

EPM manufactures infinite tones, hues, and patterns to match the most diverse laminates and pre-laminated boards. EPM edge band is also renowned for having extraordinary qualities, including toughness, adaptability, flexibility, glossy appearance, protection, etc. Our modus operandi is, **'We can provide any color and size on demand.'**

EPM Edge band firm's core technicians have plenty of expertise, and the company has more than 3 years of solid technical foundation in product manufacturing and application. The technicians with the necessary training test each batch of PVC Edge Band. They retain flawless precision and accuracy by providing customers with the highest quality materials. EPM Edge Band comprises competent professionals and in-house designing experts to suit user preferences.

FEATURES

Easy to Install

100% Made in Egypt

UV Layer Coating

Cost Effective

Best Match

Good Anti-Scratch

PVC Edge Band Manufacturing Plant

We are one of the industry's most renowned manufacturers.

- At present, the production capacity is 150,000 meters per day.
- We have dealers, distributors and warehouses in Egypt.
- Any Colors & any size on demand.



EPM manufactures various types of edge banding as per customer requirements which can be classified as:

MATERIAL :

PVC, ABS

SHADES :

SOLID, WOODEN, METALLIC, FABRIC, MARBLE & STONES

FINISHES:

SUPER MATT, SUPER GLOSS & SPARKLE

ROLL LENGTH:

From 25 to 150 meters.

SIZES:

Other than the standard sizes, any size can be made as per requirements, after discussing a MOQ

STANDARD SIZES

WIDTH	TVHICKNESS
8 mm – 64mm	0.45mm
8 mm – 64mm	0.80mm
8 mm – 64mm	1.00mm
22mm / 28mm/ 48 mm	1.20mm
22mm / 28 mm/ 33mm/ 48 mm	1.5mm
22mm/ 28mm/ 33mm/ 48mm/ 64mm	2mm

PVC Edge banding Specifications

1. **Color:** Slight color variations are possible from dye lot to dye lot.
2. **Finishes:** Available in Gloss, Matt & SF.
Finish must be smooth and free of defects at a distance of 3 feet from the observer.
Material either has UV inhibitors directly in the resin or has a UV topcoat.
3. **Interior Use:** Only for interior use and not to be exposed to temperatures above 150°F.
4. **Primer:** Backside is 100% covered with a visible primer for proper bond.
5. **Maintenance:** Clean surface with warm soapy water and wipe clean.

Tolerances

Edge Banding Width

Width mm	Tolerance mm
12 – 54	± 1.00

Edge Banding Thickness

Width mm	Tolerance mm
0.4 - 0.7	± 0.05
0.8 - 1.5	± 0.10
1.6 - 2.0	+ 0.20
2.1 - 3.0	+ 0.25

Storage

PVC Edge Banding tape is resistant to rot and may therefore be stored at room temperature (64°F to 68°F) in a room that is weatherproof and protected from direct sun light for a virtually unlimited period.

Warranty

Using accepted industry standards, colors, woodgrains, and patterns have been individually matched and cross-referenced for the best suitable match. Color variation beyond the manufacturers' control may occur in individual resin batches. The manufacturer's warranty and liability for the bond, color match, and surface finish; extend only to the replacement value of the specific edge banding material. It is the customer's sole responsibility to determine that the bond and color match are acceptable for production before use.

Fire and Explosion Data

Flash Point: 390 - 700 Degrees Celsius

Flammable Limits

Upper Explosion Limit: N/A

Lower Explosion Limit: N/A

Auto Ignition Temperature: N/A

Suitable Extinguishing Media: Carbon Dioxide Blanket, Water Spray, Dry Powder, Foam

Special Fire Fighting Procedures: Full-face self-contained breathing apparatus (SCBA) used in positive pressure mode should be worn to prevent inhalation of airborne contaminants.

Unusual Fire/Explosion Hazards: May emit Hydrogen Chloride (HCL) or Carbon Monoxide (CO), Oxides of Nitrogen (NOx), other hazardous materials, and smoke are all possible.

Reactive Data

Product Stability: Very Stable

Reactivity conditions: Under normal usage none. However, harsh chemicals such as Ketones, Toluene's, Acetones and other similar solvents may melt or react with the surface finish.

Hazardous Decomposition Implications: Hydrochloric acid can be formed if product is heated to the point of burning and then in the presence of water may form Hydrochloric Acid.

First Aid

Inhalation: Remove the affected user to a well-ventilated area.

Eye Contact: Irritant only on contact, bathe area affected.

Ingestion: Under normal condition, there is no probable route of ingestion.

Skin Contact: Non-Toxic

Disposal and Storage

Waste Disposal: Landfill

Recycle: Product can be reprocessed for re-use.

Environmental Toxicity: Adverse ecological impact is not known or expected under normal use.

A collection of material samples including wood, fabric, paper, and dried plants. The samples are arranged on a light yellow background. A dark wood sample is on the left. A white fabric sample is in the center. A white paper sample with colorful geometric patterns is at the top right. A black cylindrical object is below the patterned paper. A light brown paper sample is in the middle right. A dark wood sample is at the bottom right. Dried brown plants are on the white fabric. A dark wooden bowl is partially visible at the bottom left.

WOODEN SERIES

MATT & GLOSS

COLOUR CHART

WOODEN SHADES



SF13008



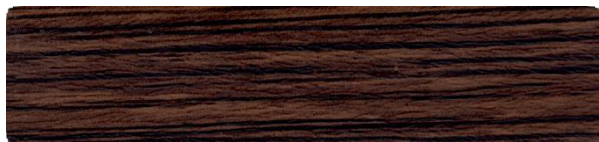
VLY 11656



MW 690



MW 692



SP 110



MAKAN 002



BRANSON



SF 3360



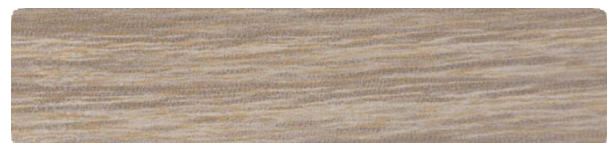
SF 3367



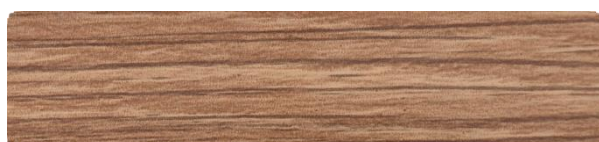
SF 3379



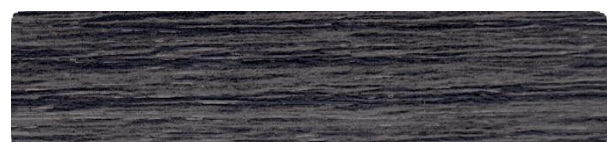
EGY 906



SF 3380



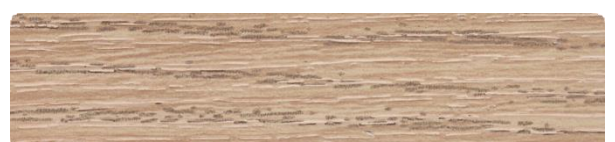
EGY 973



SP 130



EGY 965



SP 045

COLOUR CHART

WOODEN SHADES



EGL 30113



SP 182



EGY 939



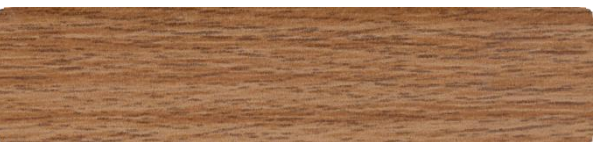
AM A428



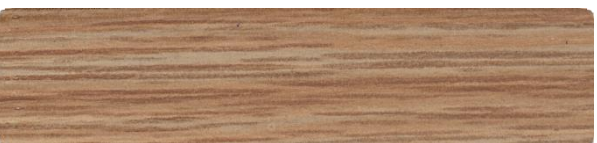
SF 56128



MW 673



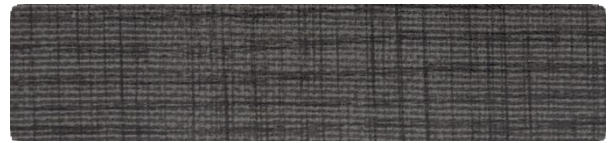
MW 670



H1113



BIANCO



SF 5124



SP 137



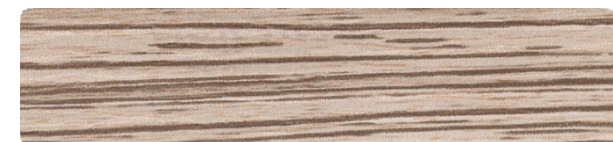
MW 662



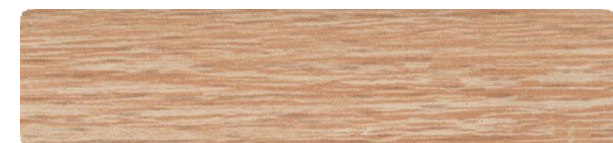
EGY 902



SF 3362



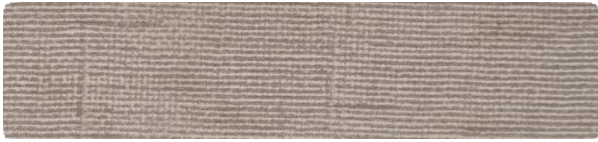
AK 3036



SF 5006

COLOUR CHART

WOODEN SHADES



Q- VISON



SF 8761



STARWD 141



ALSRARK 1



SF 5124



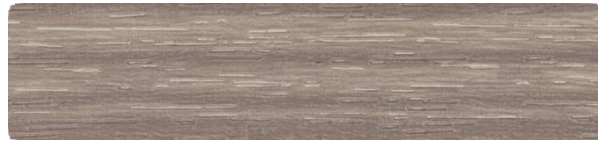
COSMOS



MW 664



MW 631



SP 100



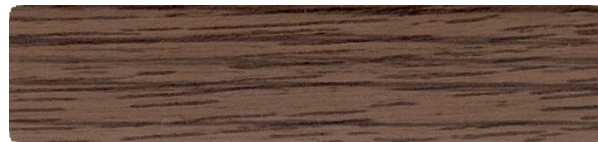
STARWD 301



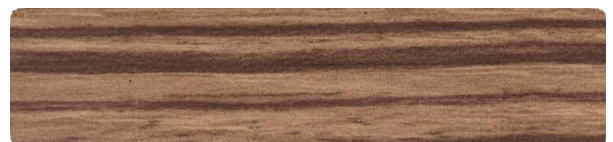
SF 5116



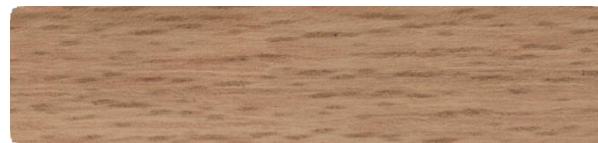
MW 650



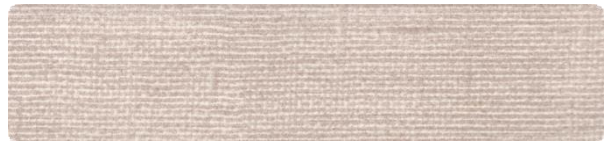
MW 665



AM SAMBA



EGY 951



TEUF 909

COLOUR CHART

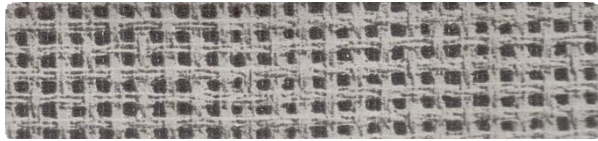
WOODEN SHADES



SOHO



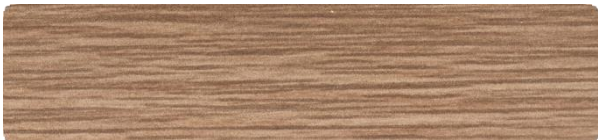
SP 142



LAGOS



MW 615



MW675



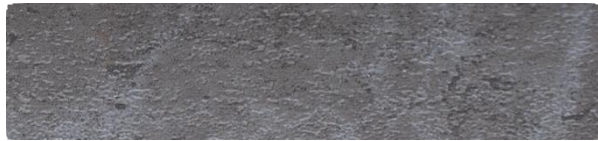
STARWD 141



SF 40463



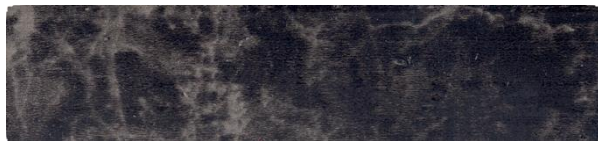
ROE 08



H461



H274



40217



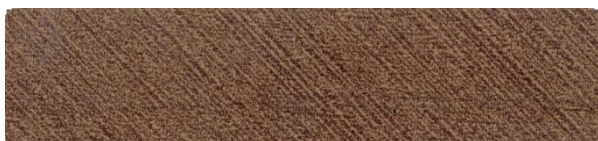
302



2209



KAYIN



PESARO



OK LADY

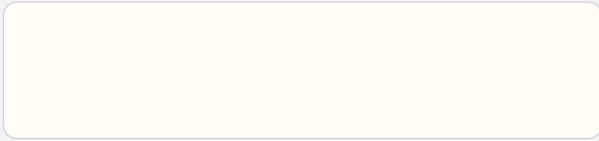


SOLID SERIES

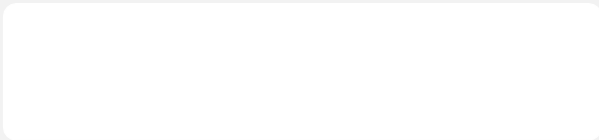
MATT & GLOSS

COLOUR CHART

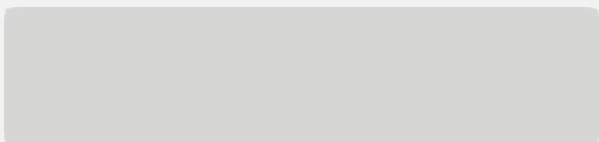
SOLID SHADES



M WHITE



WHITE



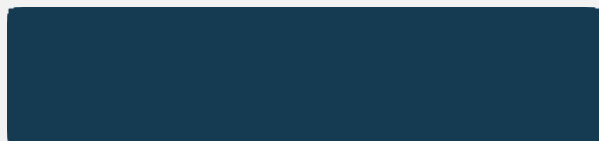
21069



22062



21063



220102



D230



22122



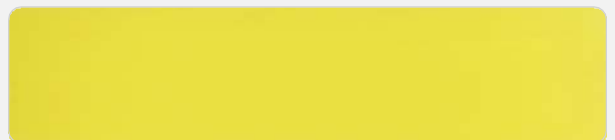
953



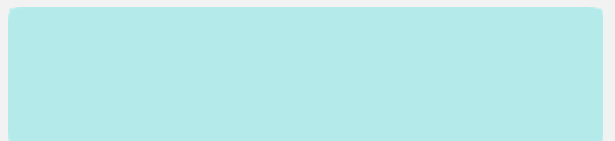
D143



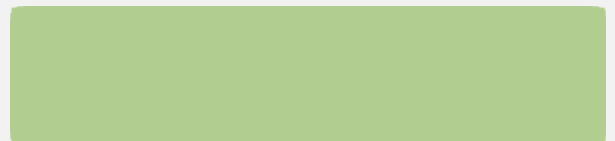
D164



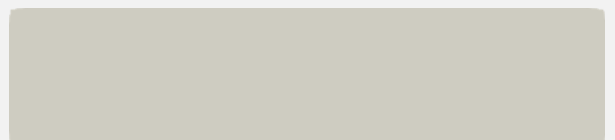
Canary



21082



21003



D217



D161

COLOUR CHART

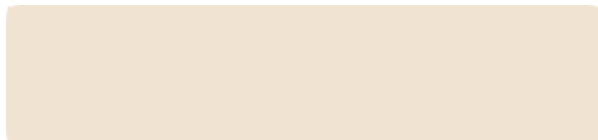
SOLID SHADES



21009



21027



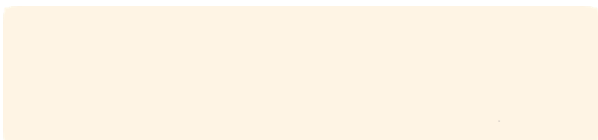
21161



MANGO



SMURF BLUE



STAR 58



LILAC BLUE



LIGHT GREY



AM METALIC



D218



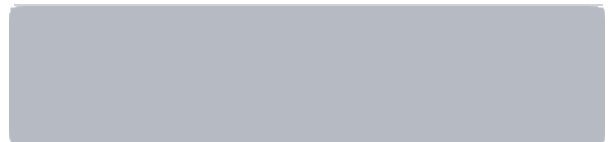
LIGHT ROSE



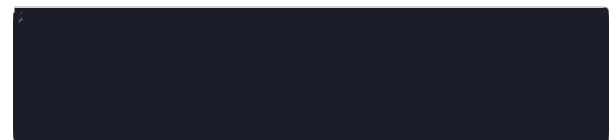
ANTRASIT



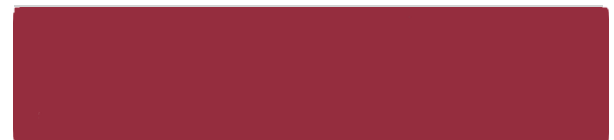
AM YESILI



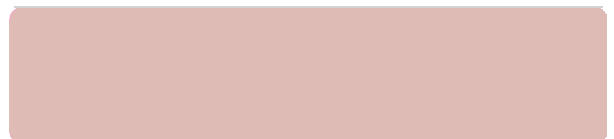
EGY 833



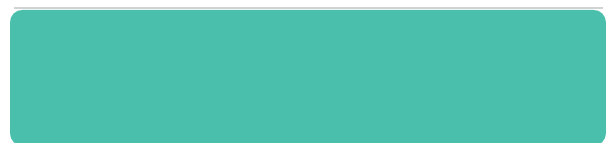
SIYAH MA



NEW RED



PALE PINK



EMERALD



Egyptian Plastic Manufacturers

Tel (+20) 100 870 2600

Email sale.epm@outlook.com

Administration Office Piece 1407, Baroon St., Mokattam. Cairo, Egypt

Factory Piece 10, Block 20010, 1st Industrial Zone, Obour City, Egypt